



Parametric Roof Structure

van der Gouw Levi

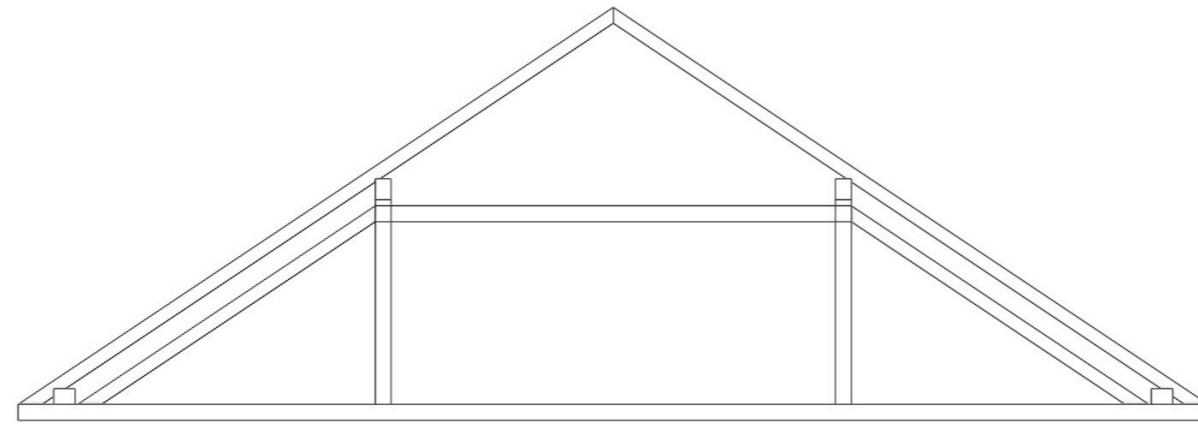
Project Description:

The goal is to create a script that allows for the dynamic generation of roof trusses based on user-defined parameters. By adjusting inputs such as roof length, width, height, and beam profiles, the model updates accordingly, ensuring flexibility and efficiency in the design process.

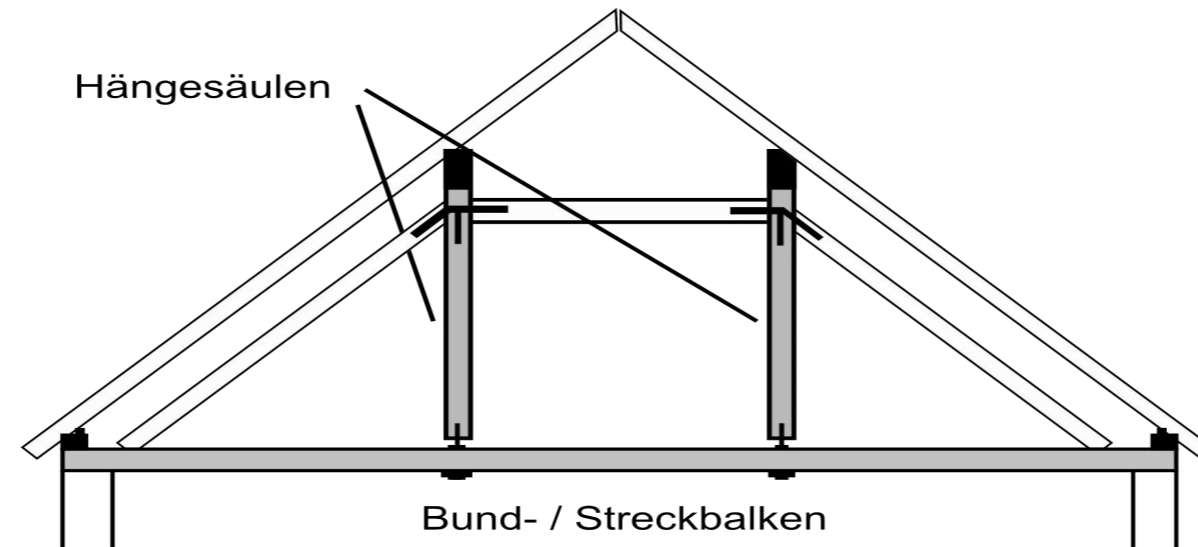
Thanks to the double hanging truss version I chose, the spacing between the horizontal beams not only provides structural stability but also creates usable space, offering potential for storage, technical installations, or even functional loft areas within the roof structure.

Softcoded Parameters:

- Roof_Length
- Roof_width
- Roof_hight
- Purlin Dimensions
- Other Beam and Rafster Profile Dimensions



Front View



Description of key elements

