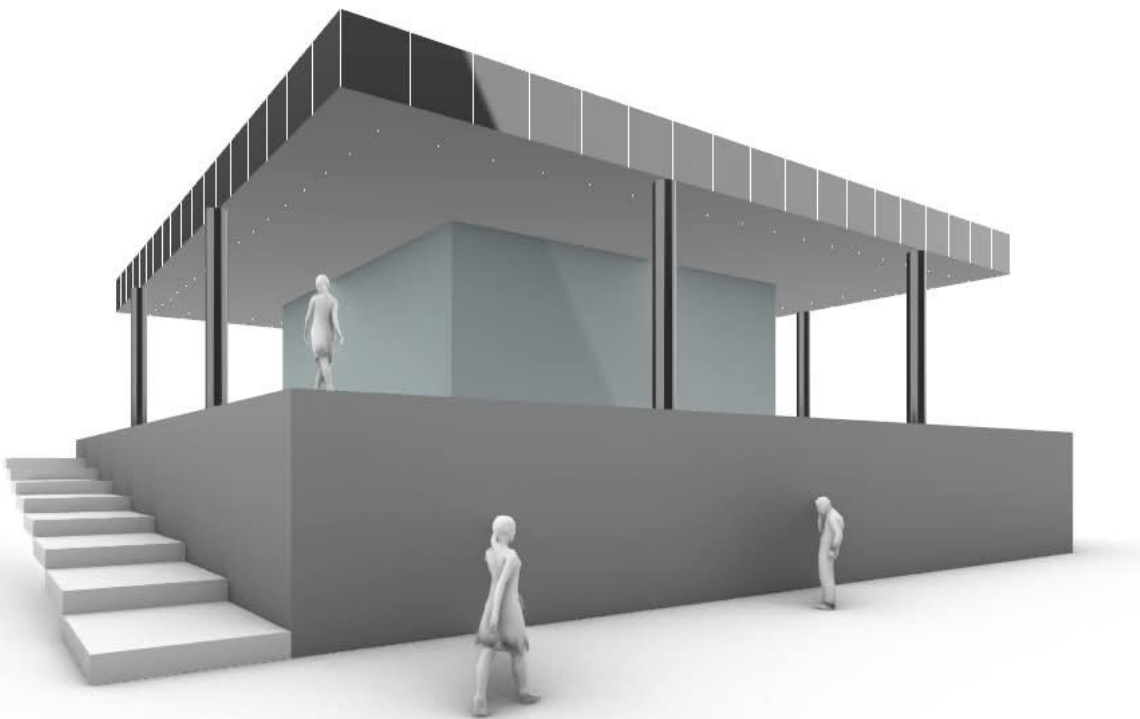
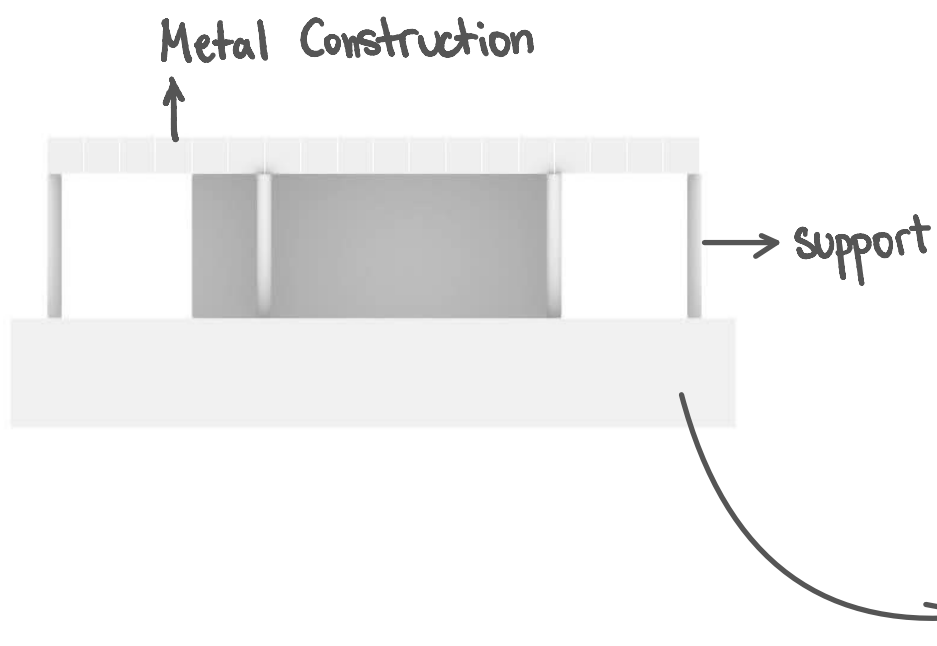


neue Nationalgalerie **BERLIN**



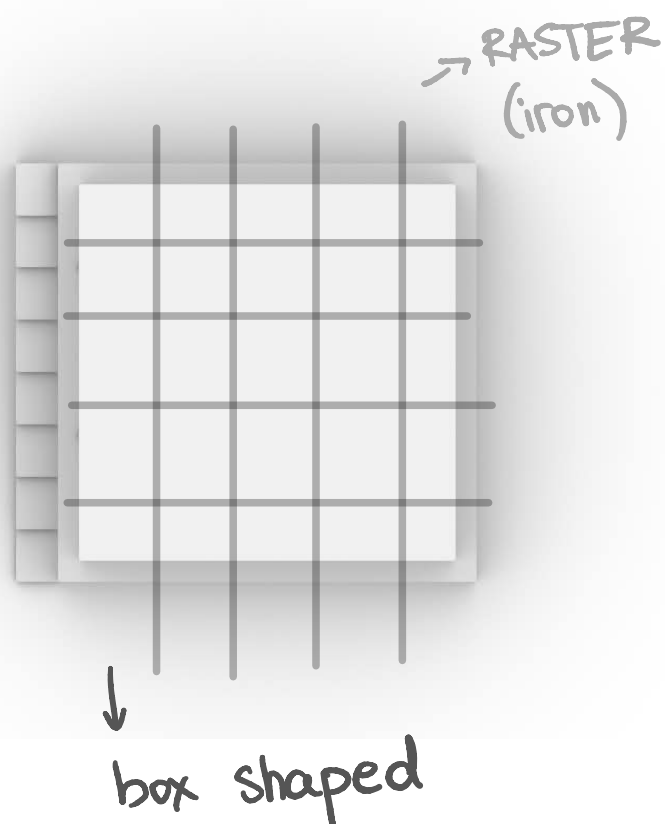
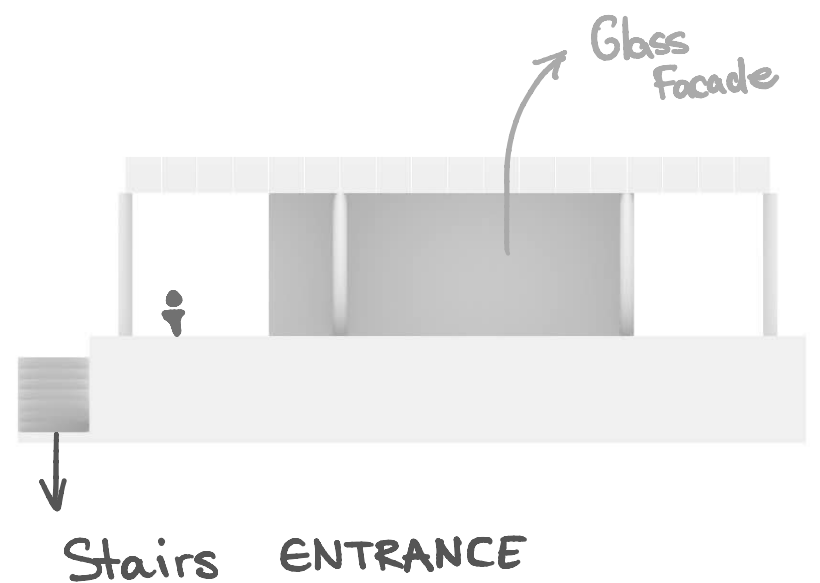


FLOOR LEVELS

In the gallery setting the floors are divided by two different levels. One floor being on street level while other stays lower connecting them with the stairs.

STAIRS

Stairs welcome you either to ground platform where it is the hall for bigger exhibitions, or the others that lead you into back garden and main exhibiting area.



DESIGN

Base of the concept are three different levels connecting this structure. Metal roof supported by iron tubes holding raster elements. Middle area mainly glass material and lower level backyard area.

ORIGINAL
concept:

